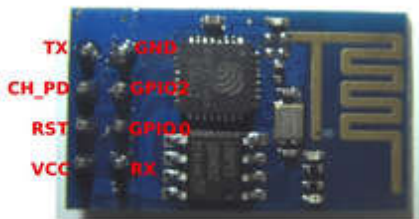


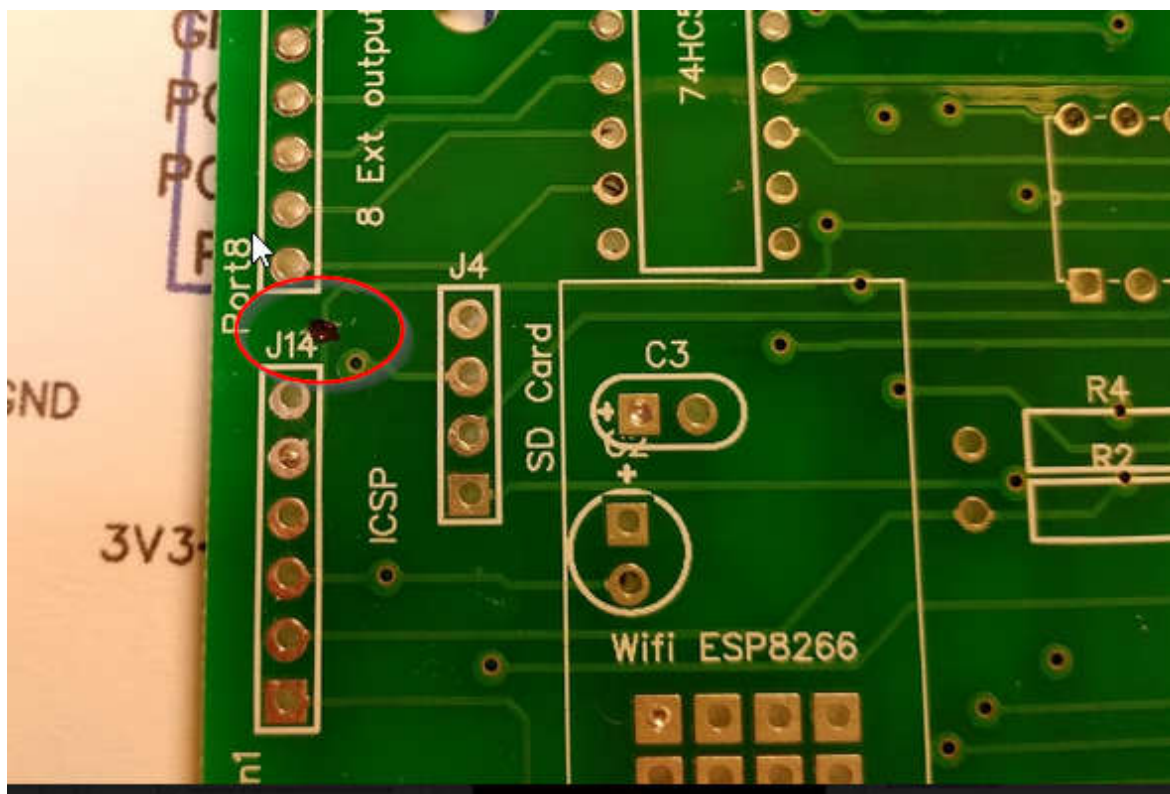
View of ESP8266 from the top

GND is designated pin2



Cut and Wire the following changes

On the top cut the track as shown from J2-5



1, On the bottom cut tracks 2 places to the back of the ESP8266 connector, pins 2 & 6 ,they are GNDs, object is to have pin6 floating

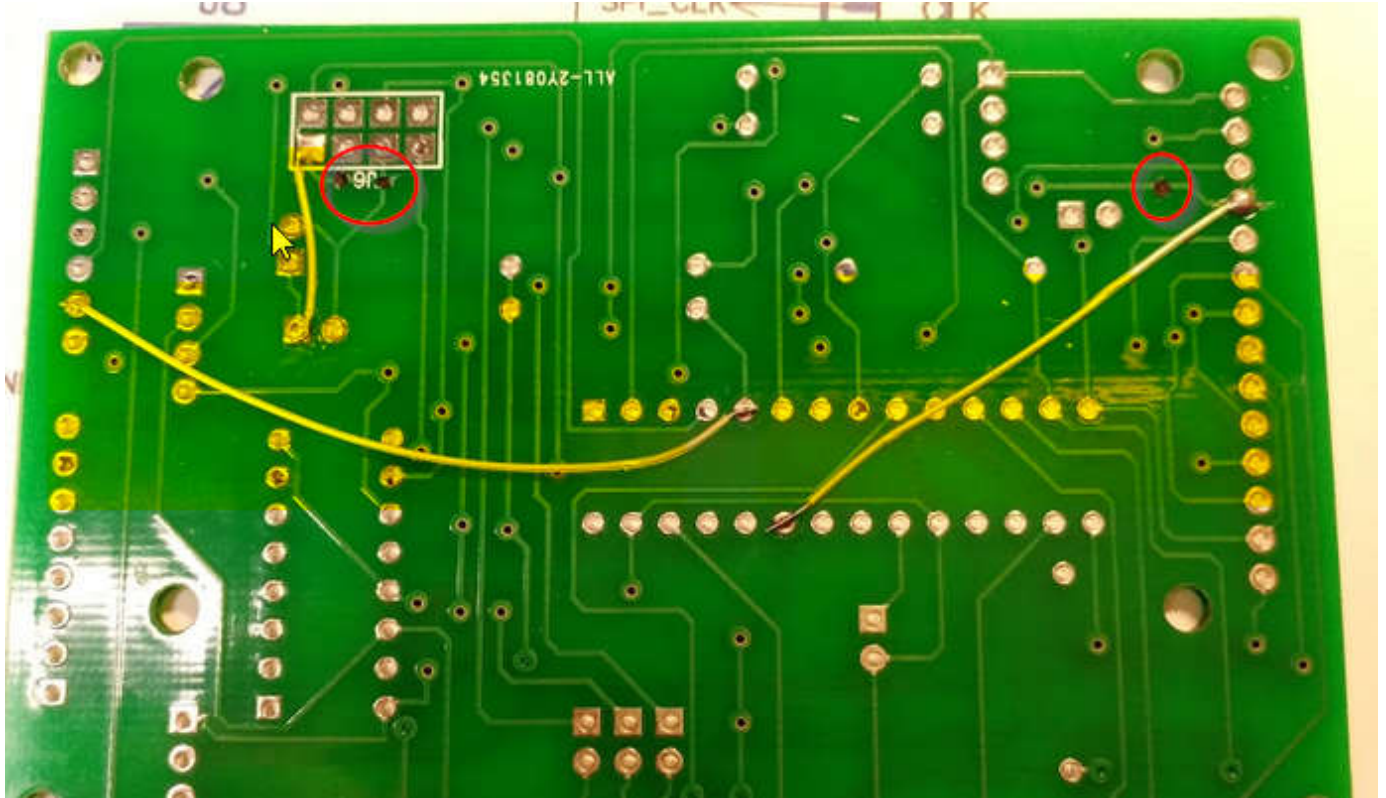
2, Cut track from JP1-4

then make these connections, length of kynar enclosed in case you haven't any.
(probably best to do these after you have populated the board)

3, from ESP connector pin1 to GND as shown

4, from J4-5 (ICSP) to MX170 pin5

5, from JP1-4 to MX170 pin23



Check my server for other changes, software etc, <http://codenquits.synology.me:2244/cms/>
Mike